

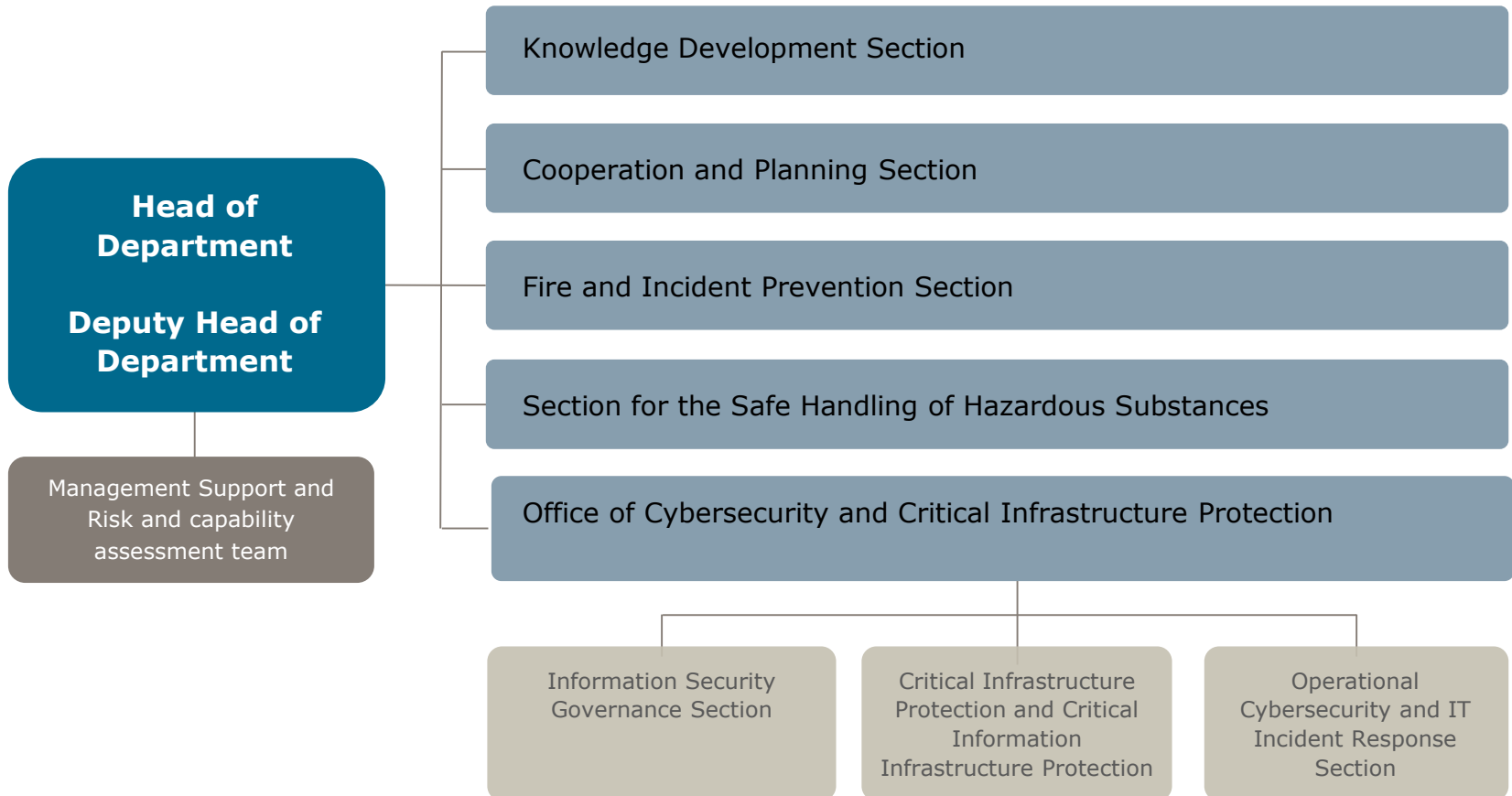
How Sweden interpret the Seveso-law concerning manufacturing of explosives with so called MEMU

**Mikael Larsson, The county
administrative board of Norrbotten**

Agneta Jansson, MSB

Resilience Development and Analysis Department

Ministry for Home Affairs



Seveso

- MSB
 - Informs and advises the private sector and the county administrative boards.
 - The work also consists of monitoring, evaluation, and coordination of the supervision of operations covered by Seveso.
- The County administrative boards
 - Supervision of adherence to the directive

How Sweden interpreted Seveso

- Quarries
 - About 200 quarries in lower level
- Infrastructure such as road construction, etc.



Regulation to manufacture explosives

- In Sweden MSB is the authority that regulate almost all handling of explosives
- This include production of explosives with a MEMU
 - 10 companies that produce explosives with a MEMU in Sweden



Permits to manufacture explosives with MEMU and to travel at public roads

- Produce explosives with a MEMU is regulated in Flammables and Explosives Act (LBE).
- Travel to and from the area where the MEMU should be used is regulated in Transport of Dangerous Goods (TFG).



Swedish Civil
Contingencies
Agency

MEMU

- Above ground
 - LBE, TFG
- In mines or closed areas above ground like open mines and quarries
 - LBE



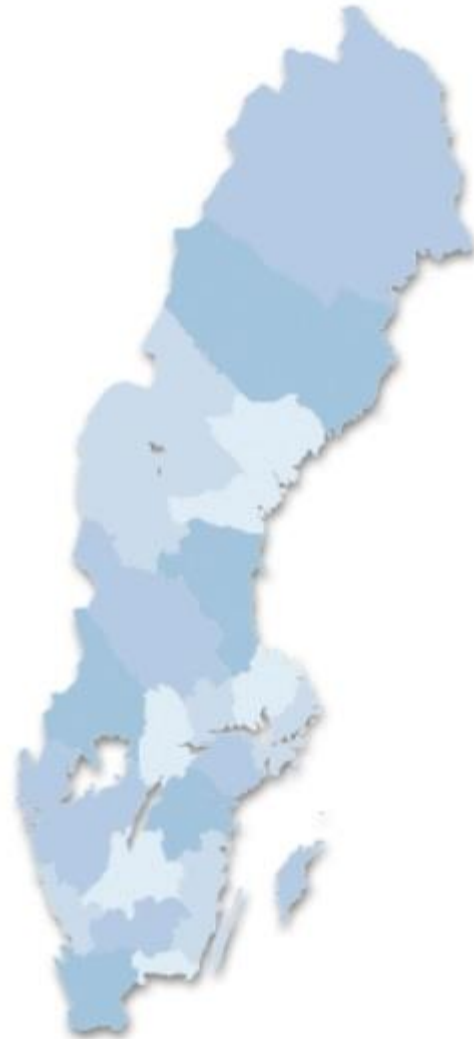


Supervision of adherence LBE and TFG

- Supervision of production of explosives is carried out by MSB
- Supervision of the MEMU when it is traveling to and from the work area is carried out by the police.

Seveso inspections in Sweden

- The County Administrative Boards
 - Supervision of compliance to the Seveso Directive



Implementation of the Seveso III Directive in Sweden

Seveso legislation in Sweden

- [Lagen \(1999:381\) om åtgärder för att förebygga och begränsa följderna av allvarliga kemikalieolyckor](#) (The act on measures to prevent and limit the consequences of serious chemical accidents)
- [Förordningen \(2015:236\) om åtgärder för att förebygga och begränsa följderna av allvarliga kemikalieolyckor](#) (The regulation on measures to prevent and limit the consequences of serious chemical accidents)
- [Föreskrifter \(MSBFS 2015:8\) om åtgärder för att förebygga och begränsa följderna av allvarliga kemikalieolyckor](#) (Regulations on measures to prevent and limit the consequences of serious chemical accidents)

Laws and regulations directly linked to the Seveso legislation in Sweden

- [Miljöbalken \(1998:808\)](#) (The environmental code)
- [Lagen \(2003:778\) om skydd mot olyckor](#) (Act concerning the protection against accidents)
- [Plan och bygglagen \(2010:900\)](#) (Planning and building act)
- [CLP-förordningen](#) (CLP-regulation)
- [Förordningen \(1998:899\) om miljöfarlig verksamhet och hälsoskydd](#) (Regulation concerning environmentally hazardous activities and health protection)
- [Miljötillsynsförordningen \(2011:13\)](#) (Regulation on environmental inspections)
- [Förordningen \(2003:789\) om skydd mot olyckor](#) (Regulation concerning the protection against accidents)

Laws that can exist along the Seveso legislation in Sweden

- [Lagen \(2010:1011\) om brandfarliga och explosiva varor](#) (Flammables and explosives act)
- [Lagen \(2006:263\) om transport av farligt gods](#) (Transport of dangerous goods act)



Supervision of compliance to the Seveso Directive

The supervision shall be designed to allow a planned and systematic examination of the technical, organizational and operational systems employed at the establishment, and specifically include checking:

1. that steps have been taken to prevent serious chemical accidents and to limit the consequences of such accidents,
2. that the information contained in the action plan, the safety report or any other document submitted to the County Administrative Board is consistent with the circumstances of the business, as well as
3. that the public have access to the information provided in § 14 the act (1999: 381) on measures to prevent and limit the consequences of serious chemical accidents.



Seveso inspections, practical work

- There are about 390 Seveso establishments in Sweden:
 - Upper tier, ca 210, inspections every year
 - Lower tier, ca 180, inspections every third year
- 21 County Boards in Sweden, co-ordinated inspections via:
 - Regulatory support by MSB, with written material, seminars and training on Seveso legislation and its application – national education plans
 - Head group Seveso (MSB, Lst, NV, AV)
 - Working group Seveso (MSB, Lst, NV, AV)
 - Regulatory support and checklists by Miljösamverkan Sverige*, written material and seminar together with MSB



*Miljösamverkan Sverige

- Environmental Cooperation Sweden (Miljösamverkan Sverige) is conducted in collaboration between the County Administrative Boards, the Environmental Protection Agency, the Swedish Board of Agriculture, and the Swedish Agency for Marine and Water Management.
- The organization consists of a steering committee, a reference group and project groups with associated project and contact persons.
- Seveso project/issues covered in 2015/2016.



Seveso inspections, cont.

- Each County Administrative Board is responsible for:
 - A multiannual supervision plan that covers all Seveso establishments in the county.
 - Supervision programs for each Seveso establishment.
- Seveso inspections are done according to the multiannual plan and identified needs via the program for each establishment.
 - Usually half day or one day inspections.
 - Has an inspection theme – questions in office and on the field / relevant area out at the establishment.
 - Follows up pending Seveso cases and eventual questions from the previous Seveso inspection.
 - Follows up on domino effects, how they practice their preparedness for accidents, risk management, routines for handling chemicals, etc.



Inspection themes, examples

- Overall orienting (it basically covers the whole Seveso legislation on the surface).
- Review of procedures for ongoing supervision and maintenance.
- Review of procedures for the identification and assessment of risks.
- Review of procedures for learning from accidents and incidents.
- Review of procedures for emergency planning.
- Review of procedures for handling changes.
- Review of the safety management system.



After the Seveso inspection

- A written decision within 2 months.
 - Order
 - Imposition of penalty
 - Prohibition
- Follow up of inspection
 - If serious shortage, follow up within 6 months with new inspection.



Thanks!



Mikael.C.Larsson@lansstyrelsen.se



+46 (0)10-225 55 27

+46 (0)73-04 04 007





Swedish Civil
Contingencies
Agency

Thank You for listening

agneta.jansson@msb.se

+46 (0)10 240 5227